

# invisibLED

Quality Eco Lighting System  
優質環保的照明系統

- Adopting LEDs and CAE designed **non-glare freeform** reflectors to achieve optimized light intensity, **high energy efficiency** and **evenly distributed light pattern**;  
採用LED作為光源，配以電腦輔助設計的**無眩光自由曲面**反光杯，**invisibLED**在維持**高光效**的基礎上，可實現更為**均勻光亮**的照明效果；
- Applied in **retail lighting** and **office lighting** respectively with tailor made freeform reflectors;  
使用不同設計的多自由曲面反光杯，可分別應用於**零售照明**及**辦公室照明**；
- Makes the lighting fixture design more flexible, compact and elegant via **module design** concept;  
藉助**模組化設計**理念，使照明設計更加靈活，燈具更加小巧美觀；
- Capable to **enhance the value-added content** of your lighting products and to **increase your market competitiveness**.  
有助於**提高照明產品的附加值**並**提升其市場競爭力**。

## Retail lighting

零售照明



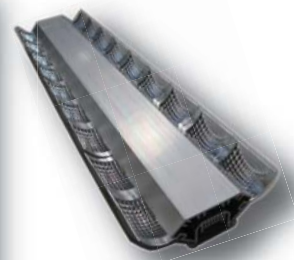
invisibLED fixture for retail lighting  
應用於零售照明之invisibLED模組



Showcase using invisibLED  
應用invisibLED之飾櫃



Office using invisibLED  
應用invisibLED之辦公室



invisibLED fixture for office lighting  
應用於辦公室照明之invisibLED模組

## Office lighting

辦公室照明

### Benefits of invisibLED · invisibLED之優點

- ※ CAE optical design & optimization  
電腦輔助光學設計優化
- ※ Free of glare  
沒有眩光
- ※ High lighting efficiency  
高光效
- ※ Modular concept  
模組概念
- ※ Compact fixture  
節省空間
- ※ Freeform reflector  
自由曲面反光杯
- ※ Even light distribution  
均勻光照
- ※ Energy saving  
節省電力
- ※ Elegant lighting design  
照明設計典雅
- ※ Longevity  
耐用可靠

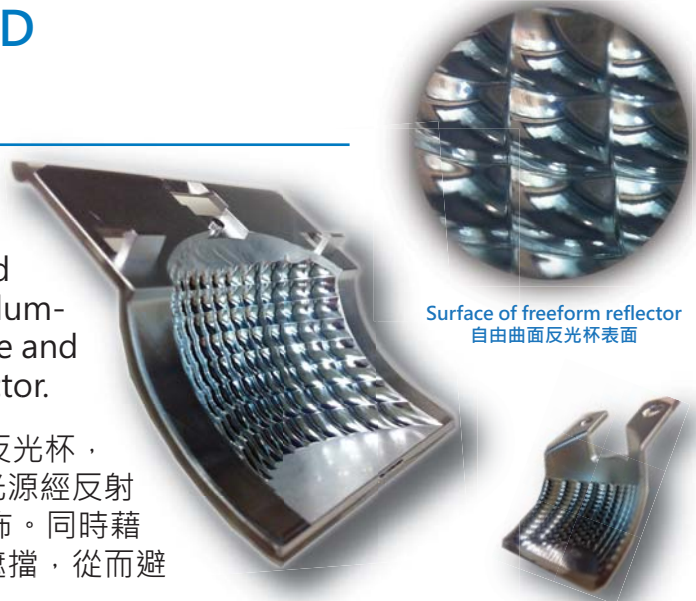
#### Patent · 專利信息

PRC Utility Model Patent  
中國實用新型專利: 201020105044.8  
Hong Kong Short-term Patent  
香港短期專利: 10100805.3

## Development of invisibLED invisibLED之開發

**invisibLED** adopts CAE designed and optimized reflectors which are customized by freeform facets aligned in grid. **invisibLED** can achieve even illuminance distribution on the target plane and avoid glare by hiding LED in the reflector.

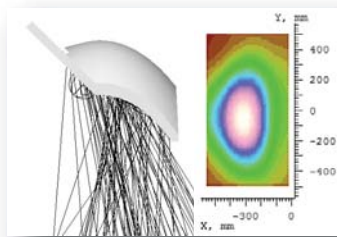
**invisibLED**採用了電腦輔助設計優化的反光杯，其表面由多個自由曲面拼接而成，LED光源經反射後可在指定平面上實現均勻的光照度分佈。同時藉助巧妙的結構設計使得LED被反光杯所遮擋，從而避免了眩光。



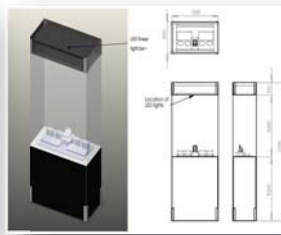
Office lighting reflector  
辦公室照明之反光杯

Retail lighting reflector  
零售照明之反光杯

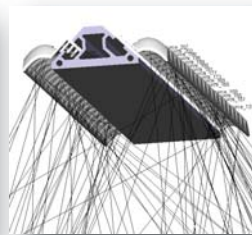
### Retail Lighting Design · 零售照明設計



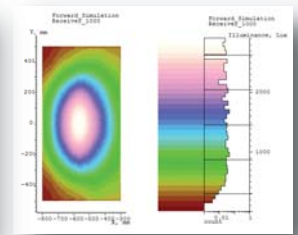
Design model and simulation  
result for single module  
單個模組的設計模型及仿真結果



Showcase design  
飾櫃設計草圖

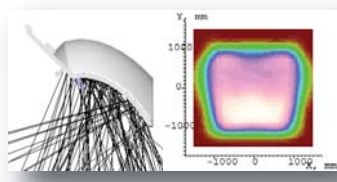


invisibLED fixture  
for showcase  
應用於飾櫃之invisibLED模組



Light distribution on  
target plane  
目標平面上光照度分佈

### Office Lighting Design · 辦公室照明設計



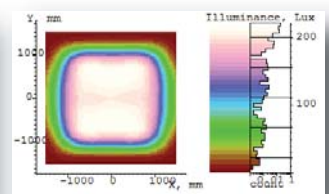
Design model and simulation  
result for single module  
單個模組的設計模型及仿真結果



Model of office lighting  
辦公室照明設計草圖



invisibLED fixture  
for office lighting  
應用於辦公室照明之invisibLED模組



Light distribution on  
target plane  
目標平面上光照度分佈

For any enquiries, please contact Ms Kany ZHOU of Automation Service Division (ASD)  
Address: Automation Service Division, HKPC Building, 78 Tat Chee Avenue, Kowloon, Hong Kong  
Tel: 852 2788 5554 Fax: 852 2788 5002 Email: kanyzhou@hkpc.org  
如有任何查詢，請與本局自動化科技部周小姐聯絡  
地址：香港九龍達之路78號生產力大樓自動化科技部  
電話：852 2788 5554 傳真：852 2788 5002 電郵：kanyzhou@hkpc.org