

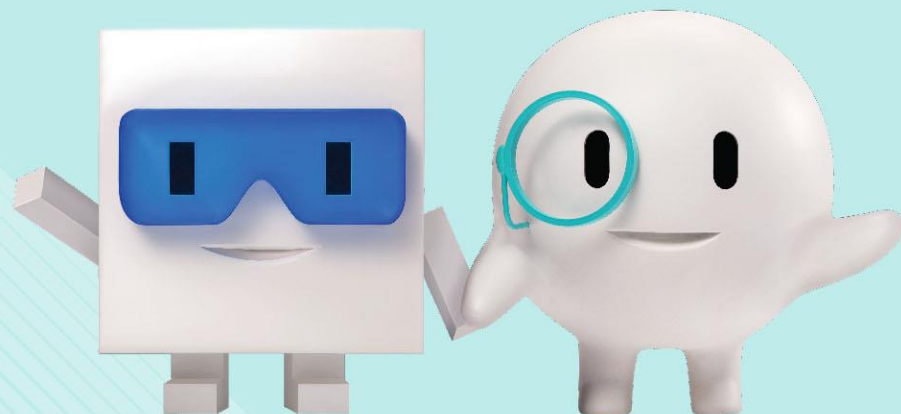


Survey on Productivity of Innovation and Technology Sector Overview

13th October 2016

Eric Cheung
Senior Consultant
Management Consulting Division

All-round Productivity Partner
全方位企業伙伴



Aim of the survey

- To understand the current difficulties faced, support needed and productivity situation of companies in Innovation and Technology Sector

Definition of Innovation and Technology Sector

- The definition of the survey respondent was that the company should be in the Innovation and Technology Sector, ie. have an aim of researching or developing innovation and technology-based products or services.

Survey Method

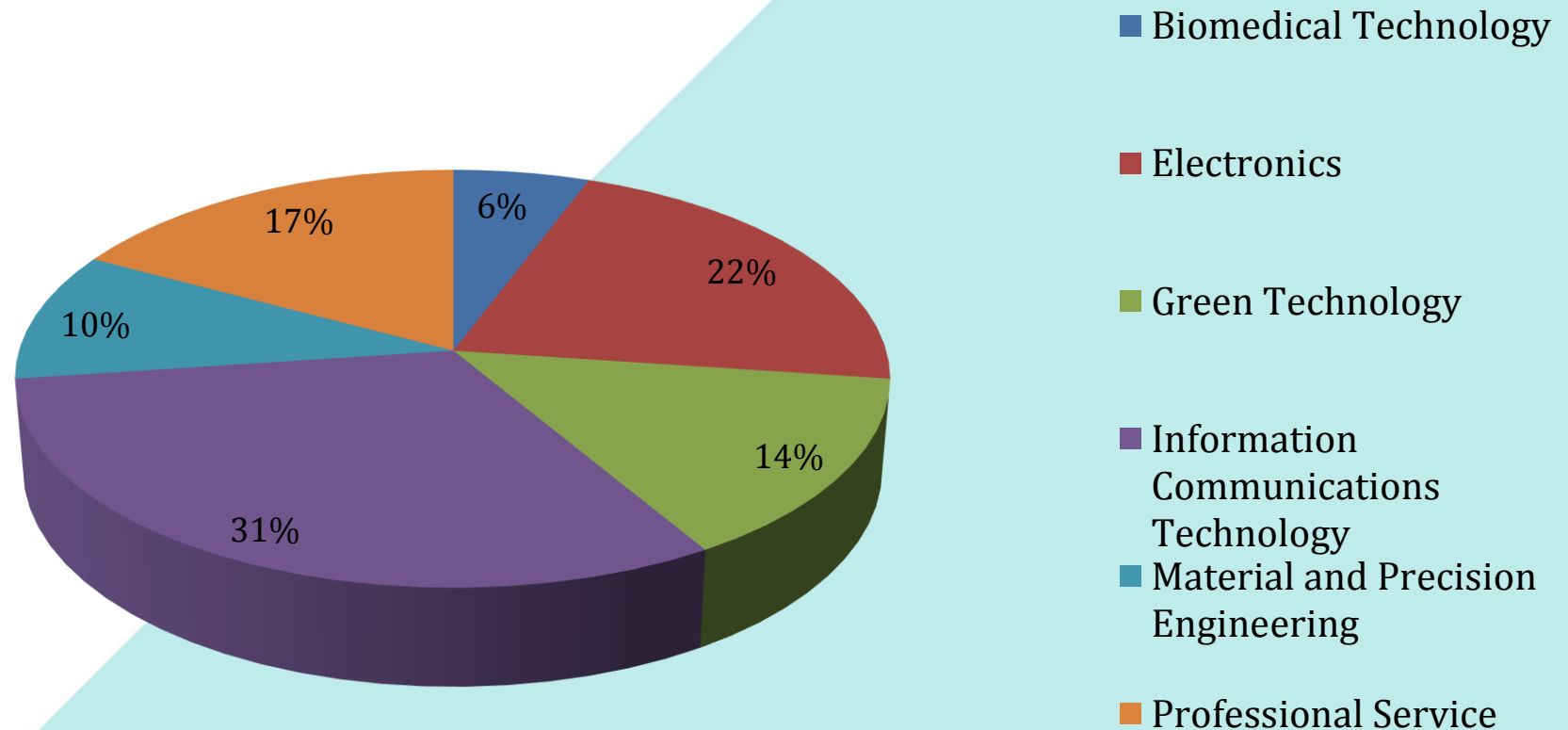
- Contacts were collected from website research, such as companies related to innovation and technology industry, or tenants in Science Park or Cyberport that are related to innovation and technology industry.
- Emails with links on a e-survey were sent to the contacts.
- Paper survey were distributed at forums or seminar that are related to innovation and technology industry.
- The surveys were collected from Aug 2016 to Oct 2016.



Survey Respondent Demographics

1. Target Participants – 70 valid responses from Innovation and Technology sector collected

Business Nature



2. Average Employee working in different sectors

Business Nature	Average Employee in HK	Average Employee outside HK
Biomedical Technology	4	2
Electronics	102	20448
Green Technology	11	31
Information Communications Technology	140	267
Material and Precision Engineering	51	85
Professional Service	38	5
Across all industries	79	4480

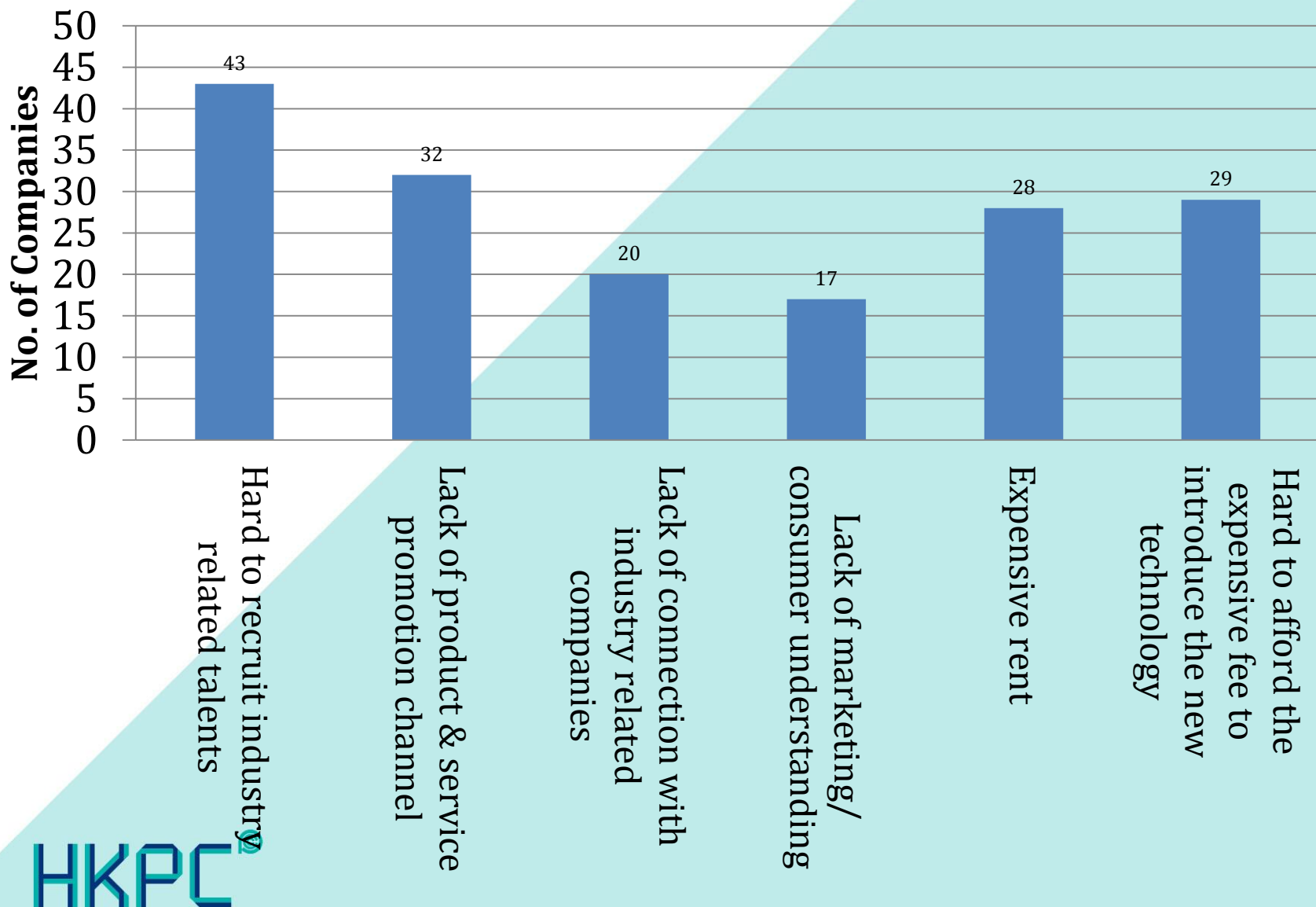
3. Company establishment in Year(s)

	Industries						
	Biomedical Technology	Electronics	Green Technology	Information Communications Technology	Material and Precision Engineering	Professional Service	Total
Less than 1 year	1		1	2		2	6
1 year to less than 3 years	2	3	3	6	1	2	17
3 years to less than 5 years	1	1	1	3		1	7
5 years to less than 10 years		1	5	5	2		13
10 years or above		10		6	4	7	27
Total	4	15	10	22	7	12	70

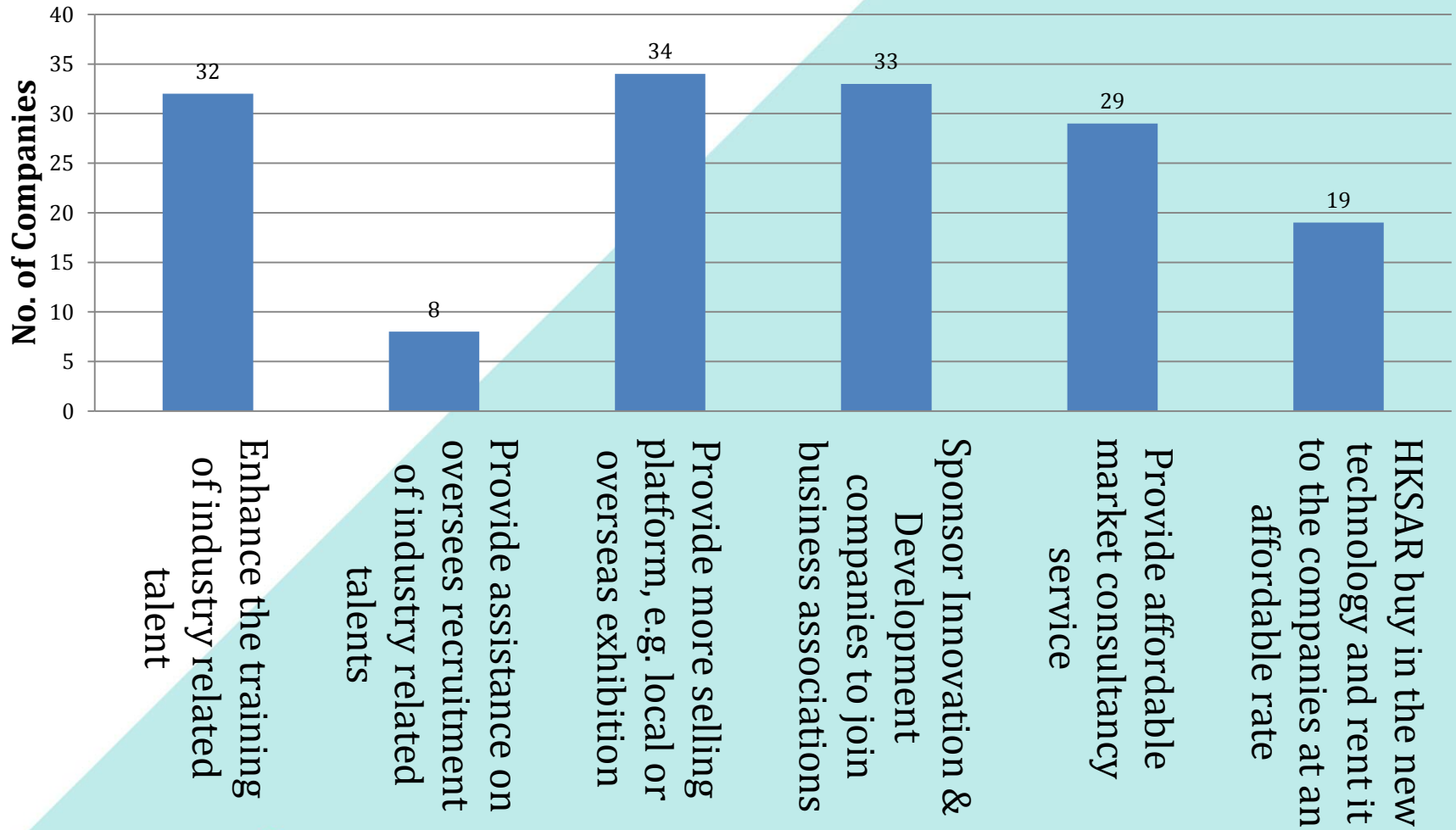


Survey Result

4. What are the difficulties that your company is facing during innovation & development work?



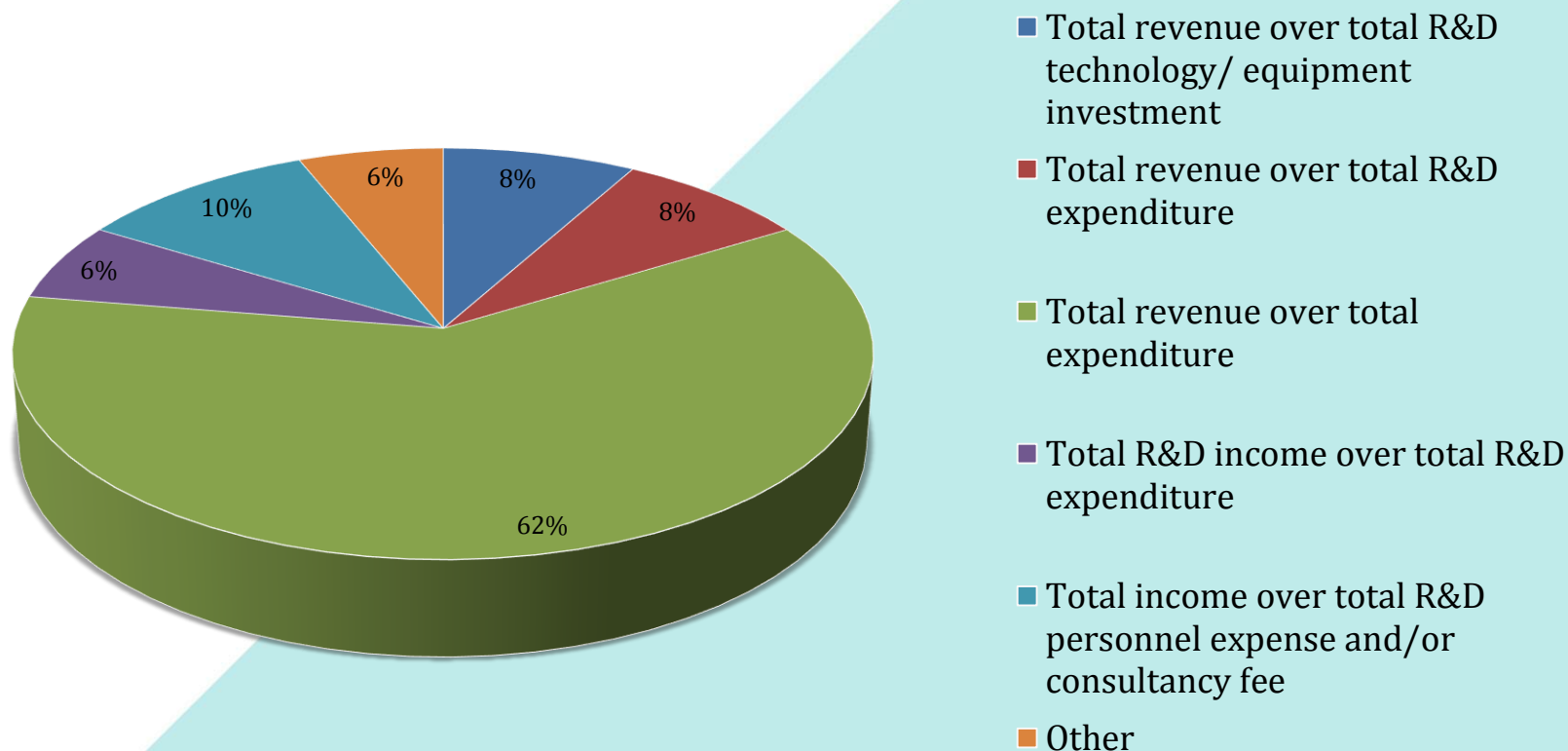
5. What are the assistance that you wish the HK government or innovation development related department could provide? (overall)



6.Average of Operation Information

	Year 2015 (In average)	2016 (Estimated) (In average)
Total Operating Revenue (HKD 10K as a unit)	\$114.09	\$151.5
Total Operating Expenditure (HKD 10K as a unit)	\$183.1	\$167.25
Percentage of revenue over expenditure (% as a unit)	62.3%	90.6%
Percentage of Technology investment/ rental fee over total expenditure (% as a unit)	21.7%	23.56%
Percentage of R&D personnel expenses and/ or consultancy fee over total expenditure (% as a unit)	33.8%	33.8%

7. Which of the following method fit your company most to measure "Productivity"?



Conclusion of Survey in Innovation and Technology Sector

Industry Challenges

- Hard to recruit industry-related talent
- Lack of promotion channels for their innovative or technology-based products and services

Support Needed

- Enhance the training of industry-related talent
- More selling platform, such as local and overseas exhibition, joining business associations

Productivity Measures

- Most companies measure productivity by percentage of revenue over expenditure, which averages at 62.3% in FY 2015
- Industry expects increase in productivity to 90.6%